

6 COWLAND AVENUE EAST HILLS

DOWNPIPE TYPE	DOWNPIPE SIZES	
	ROUND	RECTANGULAR
1	90Ø	100 X 75
2	100Ø	100 X 75
3	125Ø	100 X 100
4	150Ø	150 X 150

COWLAND AVENUE



IL 8.71

PP

TEL

BM NAIL (TOK)

RL 9.24 (AHD) IL 9.03

IL 9.08

IL 9.22

IL 9.32

IL 9.37

IL 9.40

IL 9.44

IL 9.48

IL 9.52

IL 9.56

IL 9.60

IL 9.64

IL 9.68

IL 9.72

IL 9.76

IL 9.80

IL 9.84

IL 9.88

IL 9.92

IL 9.96

IL 10.00

IL 10.04

IL 10.08

IL 10.12

IL 10.16

IL 10.20

IL 10.24

IL 10.28

IL 10.32

IL 10.36

IL 10.40

IL 10.44

IL 10.48

IL 10.52

IL 10.56

IL 10.60

IL 10.64

IL 10.68

IL 10.72

IL 10.76

IL 10.80

IL 10.84

IL 10.88

IL 10.92

IL 10.96

IL 11.00

IL 11.04

IL 11.08

IL 11.12

IL 11.16

IL 11.20

IL 11.24

IL 11.28

IL 11.32

IL 11.36

IL 11.40

IL 11.44

IL 11.48

IL 11.52

IL 11.56

IL 11.60

IL 11.64

IL 11.68

IL 11.72

IL 11.76

IL 11.80

IL 11.84

IL 11.88

IL 11.92

IL 11.96

IL 12.00

IL 12.04

IL 12.08

IL 12.12

IL 12.16

IL 12.20

IL 12.24

IL 12.28

IL 12.32

IL 12.36

IL 12.40

IL 12.44

IL 12.48

IL 12.52

IL 12.56

IL 12.60

IL 12.64

IL 12.68

IL 12.72

IL 12.76

IL 12.80

IL 12.84

IL 12.88

IL 12.92

IL 12.96

IL 13.00

IL 13.04

IL 13.08

IL 13.12

IL 13.16

IL 13.20

IL 13.24

IL 13.28

IL 13.32

IL 13.36

IL 13.40

IL 13.44

IL 13.48

IL 13.52

IL 13.56

IL 13.60

IL 13.64

IL 13.68

IL 13.72

IL 13.76

IL 13.80

IL 13.84

IL 13.88

IL 13.92

IL 13.96

IL 14.00

IL 14.04

IL 14.08

IL 14.12

IL 14.16

IL 14.20

IL 14.24

IL 14.28

IL 14.32

IL 14.36

IL 14.40

IL 14.44

IL 14.48

IL 14.52

IL 14.56

IL 14.60

IL 14.64

IL 14.68

IL 14.72

IL 14.76

IL 14.80

IL 14.84

IL 14.88

IL 14.92

IL 14.96

IL 15.00

IL 15.04

IL 15.08

IL 15.12

IL 15.16

IL 15.20

IL 15.24

IL 15.28

IL 15.32

IL 15.36

IL 15.40

IL 15.44

IL 15.48

IL 15.52

IL 15.56

IL 15.60

IL 15.64

IL 15.68

IL 15.72

IL 15.76

IL 15.80

IL 15.84

IL 15.88

IL 15.92

IL 15.96

IL 16.00

IL 16.04

IL 16.08

IL 16.12

IL 16.16

IL 16.20

IL 16.24

IL 16.28

IL 16.32

IL 16.36

IL 16.40

IL 16.44

IL 16.48

IL 16.52

IL 16.56

IL 16.60

IL 16.64

IL 16.68

IL 16.72

IL 16.76

IL 16.80

IL 16.84

IL 16.88

IL 16.92

IL 16.96

IL 17.00

IL 17.04

IL 17.08

IL 17.12

IL 17.16

IL 17.20

IL 17.24

IL 17.28

IL 17.32

IL 17.36

IL 17.40

IL 17.44

IL 17.48

IL 17.52

IL 17.56

IL 17.60

IL 17.64

IL 17.68

IL 17.72

IL 17.76

IL 17.80

IL 17.84

IL 17.88

IL 17.92

IL 17.96

IL 18.00

IL 18.04

IL 18.08

IL 18.12

IL 18.16

IL 18.20

IL 18.24

IL 18.28

IL 18.32

IL 18.36

IL 18.40

IL 18.44

IL 18.48

IL 18.52

IL 18.56

IL 18.60

IL 18.64

IL 18.68

IL 18.72

IL 18.76

IL 18.80

IL 18.84

IL 18.88

IL 18.92

IL 18.96

IL 19.00

IL 19.04

IL 19.08

IL 19.12

IL 19.16

IL 19.20

IL 19.24

IL 19.28

IL 19.32

IL 19.36

IL 19.40

IL 19.44

IL 19.48

IL 19.52

IL 19.56

IL 19.60

IL 19.64

IL 19.68

IL 19.72

IL 19.76

IL 19.80

IL 19.84

IL 19.88

IL 19.92

IL 19.96

IL 20.00

IL 20.04

IL 20.08

IL 20.12

IL 20.16

IL 20.20

IL 20.24

IL 20.28

IL 20.32

IL 20.36

IL 20.40

IL 20.44

IL 20.48

IL 20.52

IL 20.56

IL 20.60

IL 20.64

IL 20.68

IL 20.72

IL 20.76

IL 20.80

IL 20.84

IL 20.88

IL 20.92

IL 20.96

IL 21.00

IL 21.04

IL 21.08

IL 21.12

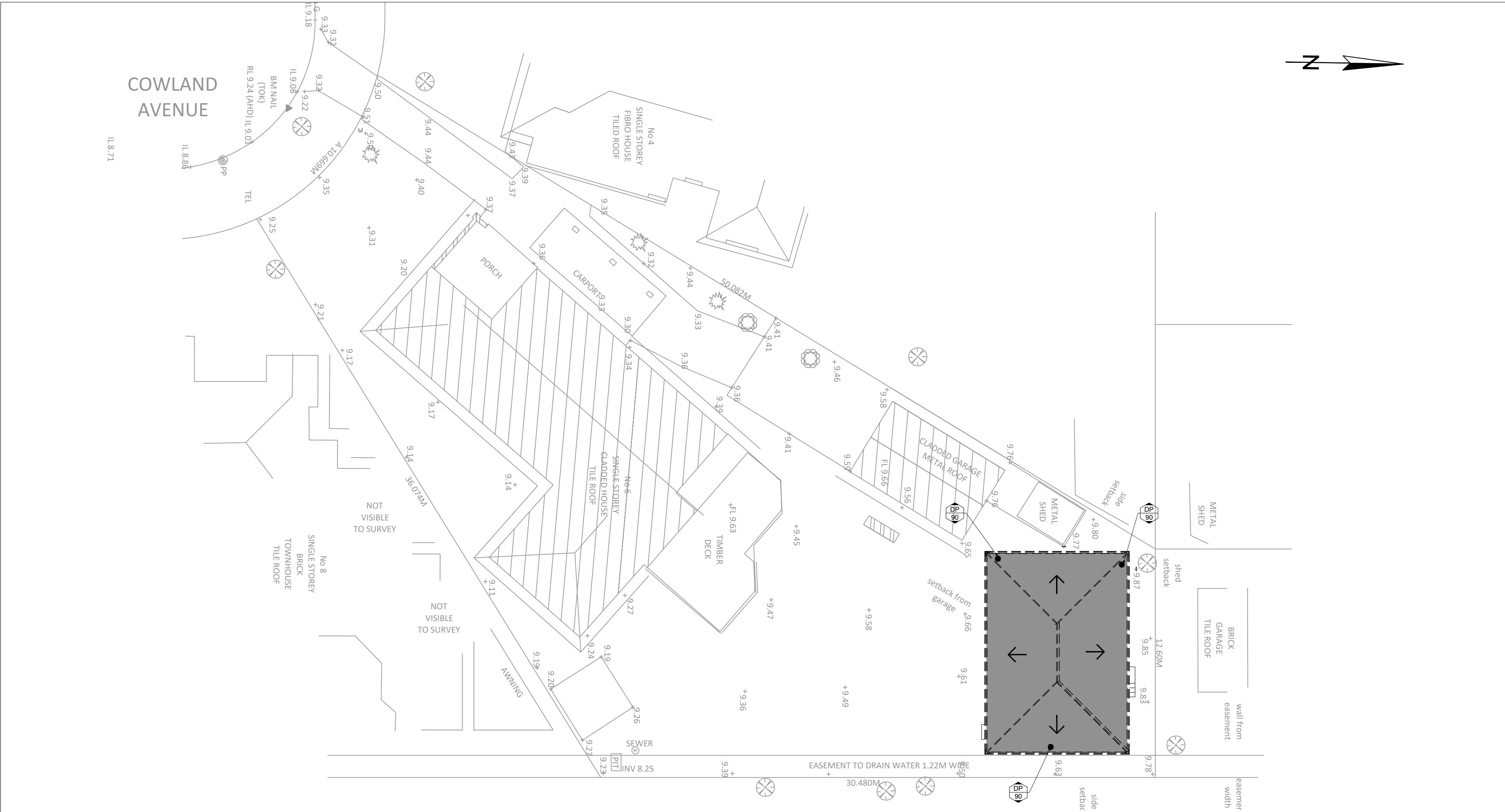
IL 21.16

IL 21.20

IL 21.24

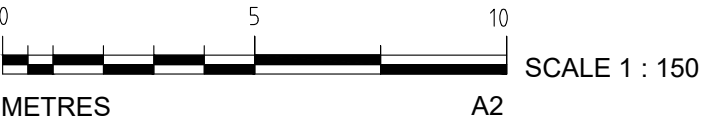
IL 21.28

IL 21.32




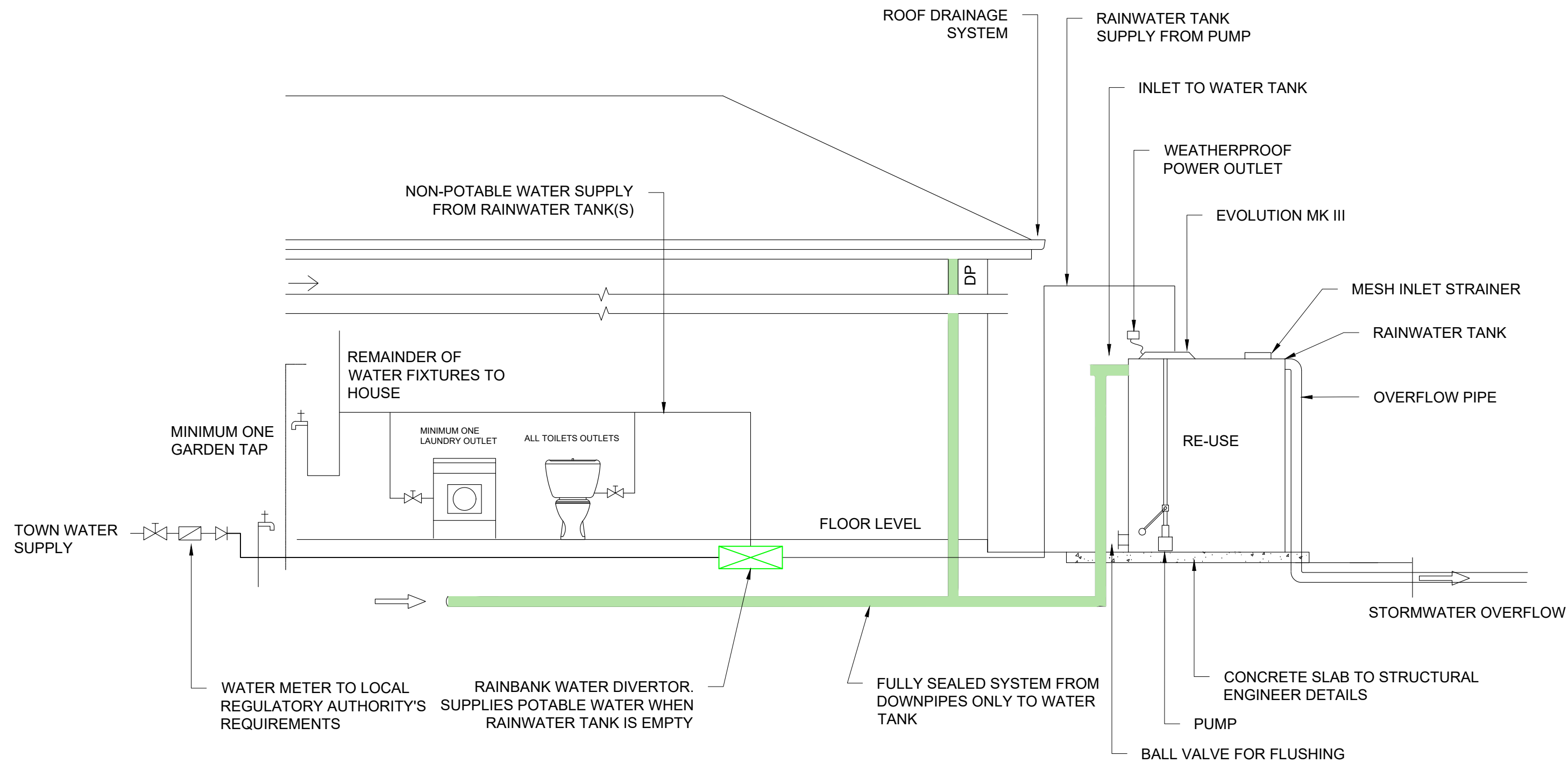
ROOF PLAN
SCALE: 1:150

 **National Engineering Register**
ENGINEERS AUSTRALIA
Con Katsoulas
BE (Civil), MIEAust, CPEng No. 449924



FOR DA APPROVAL

SURVEYOR	0	DA ISSUE	30/03/24				C.K. ENGINEERING SERVICES	CLIENT:	DRAWING TITLE:	DRAWN: S.C.	SIGNED: 	DATE: MARCH 2024
ARCHITECT							ABN 67 115 216 496	PARAMOUNT PLANNING AND CONSTRUCTION	ROOF PLAN	DESIGNED: C.K.		SCALE: AS SHOWN
PARAMOUNT PLANNING AND CONSTRUCTION							49 FLORA ST	PROJECT:		CHECKED: C.K.		DATUM: AHD
CONSULTANT	No.	AMMENDMENT	DATE	No.	AMMENDMENT	DATE	MOB: 0403 329 327	6 COWLAND AVENUE EAST HILLS		JOB & DRAWING No:	242421	No. IN SET: 3 OF 5
					DO NOT SCALE		EMAIL: ckatsoulas@gmail.com					ISSUE: 0



TYPICAL RAINWATER TANK SYSTEM


SCALE: N.T.S.

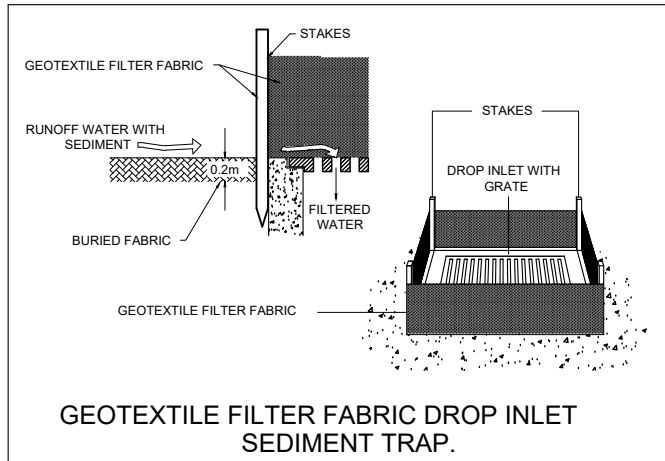
RAINWATER TANK NOTES

RAINWATER TANKS ARE TO BE:
ERECTED ON A SELF-SUPPORTING BASE IN THE APPROVED LOCATION ON THE PROPERTY IN ACCORDANCE WITH THE STAMPED-APPROVED SITE PLANS FOR THE DEVELOPMENT,
STRUCTURALLY SOUND AND CONSTRUCTED IN ACCORDANCE WITH AS/NZS 3500 1.2- 1998: NATIONAL PLUMBING AND DRAINAGE - WATER SUPPLY - ACCEPTABLE SOLUTIONS,
FULLY ENCLOSED AND ALL OPENINGS SEALED TO PREVENT ACCESS BY MOSQUITOES,
FITTED WITH A FIRST FLUSH DEVICE,
FITTED WITH A TRICKLE SYSTEM TO TOP UP FROM MAINS WATER, PROVIDED WITH AN AIR GAP, AND
INSTALLED BY A LICENSED PLUMBER IN ACCORDANCE WITH SYDNEY WATER'S "PLUMBING REQUIREMENTS INFORMATION FOR RAINWATER TANK SUPPLIERS AND PLUMBERS APRIL 2003" AND THE NSW CODE OF PRACTICE: PLUMBING AND DRAINAGE.

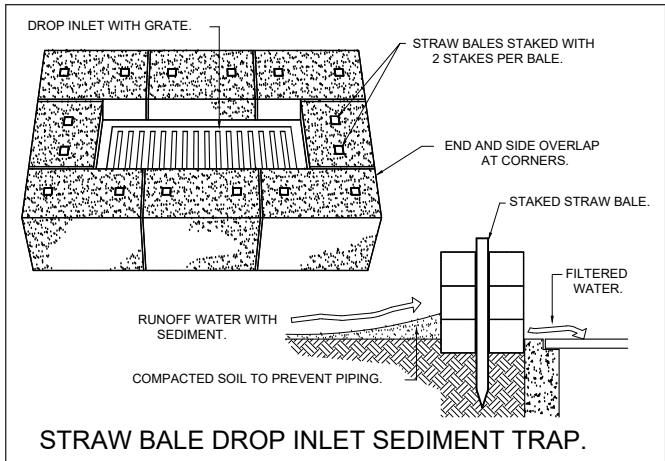

Con Katsoulas
BE (Civil), MIEAust, CPEng No. 449924

FOR DA APPROVAL

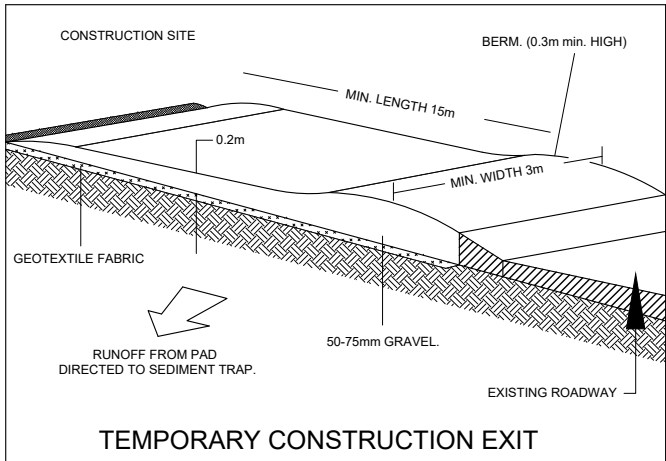
SURVEYOR	0	DA ISSUE	30/03/24				C.K. ENGINEERING SERVICES	CLIENT:	DRAWING TITLE:	DRAWN: S.C.	SIGNED: 	DATE: MARCH 2024
ARCHITECT							ABN 67 115 216 496	PARAMOUNT PLANNING AND CONSTRUCTION	RAINWATER TANK DETAILS	DESIGNED: C.K.		SCALE: AS SHOWN
PARAMOUNT PLANNING AND CONSTRUCTION							49 FLORA ST	PROJECT:		CHECKED: C.K.		DATUM: AHD
CONSULTANT	No.	AMMENDMENT	DATE	No.	AMMENDMENT	DATE	ROSELANDS, NSW 2196	6 COWLAND AVENUE EAST HILLS		JOB & DRAWING No:	242421	No. IN SET: 4 OF 5
					DO NOT SCALE		MOB: 0403 329 327					ISSUE: 0
							EMAIL: ckatoulas@gmail.com					



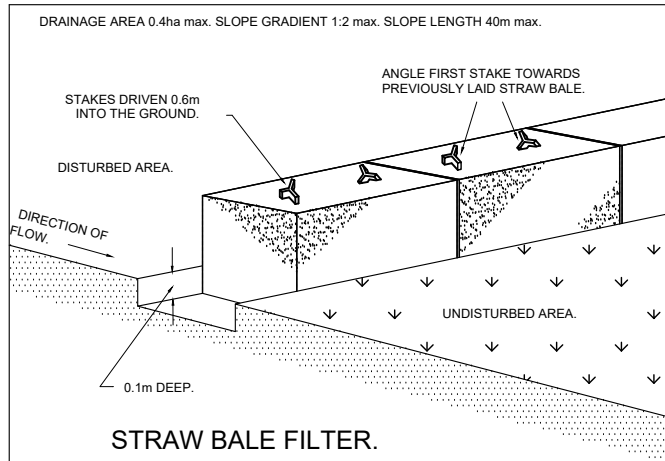
DETAIL 1



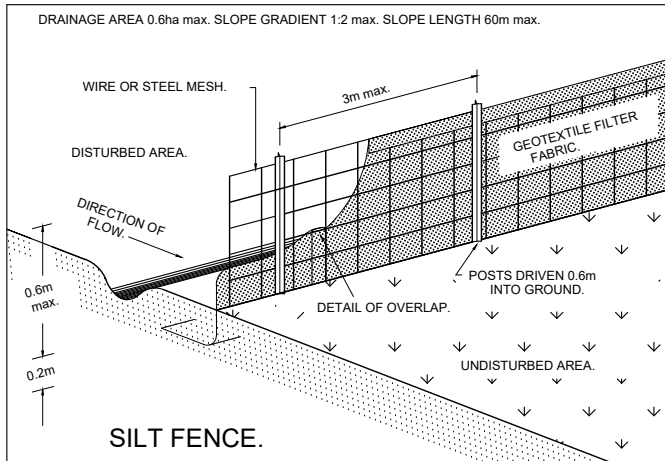
DETAIL 2



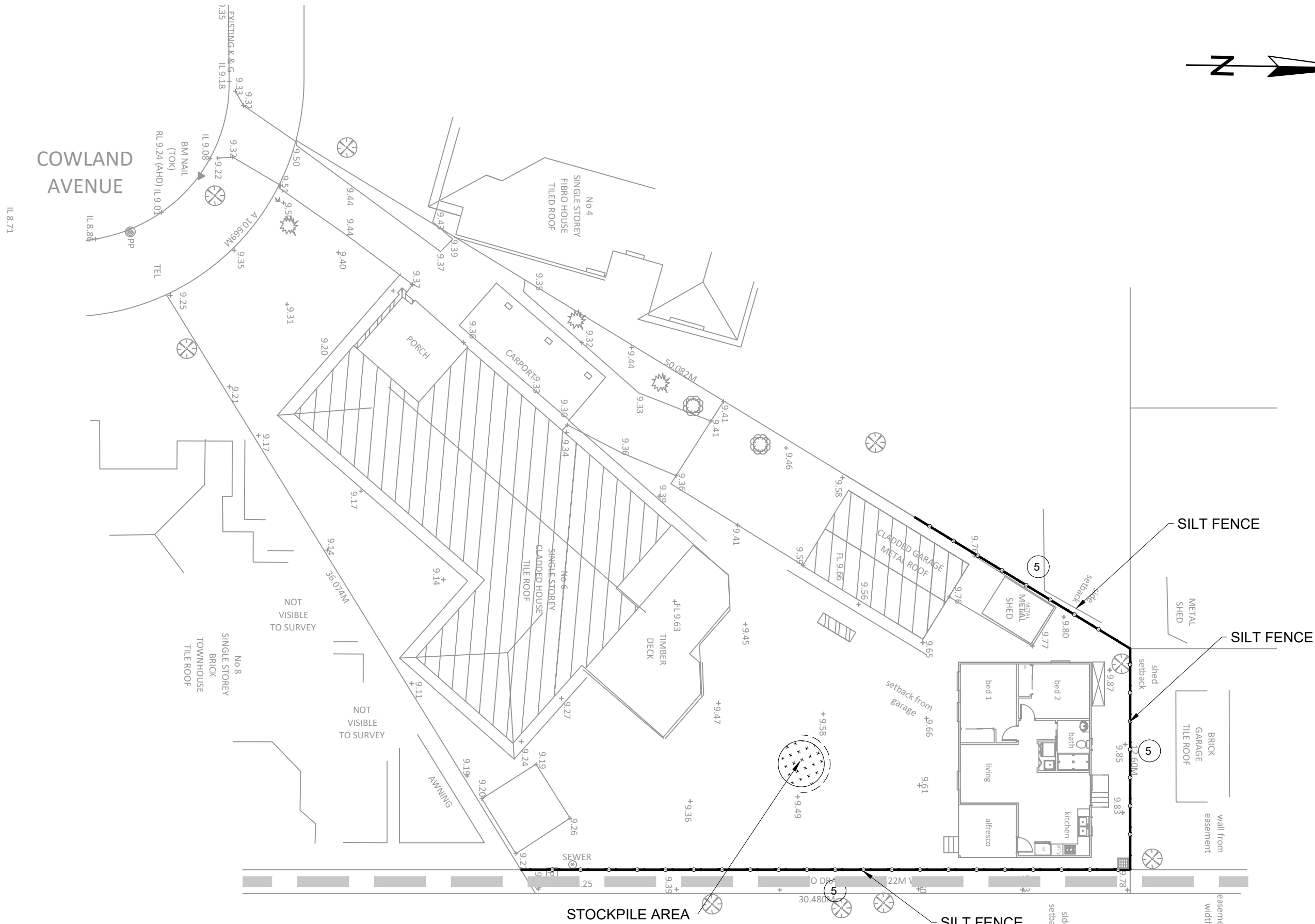
DETAIL 3



DETAIL 4



DETAIL 5



EROSION AND SEDIMENT CONTROL PLAN

SCALE: 1:200

FOR DA APPROVAL

EROSION CONTROL NOTES:

- ALL WORK SHALL BE CARRIED OUT IN ACCORDANCE WITH COUNCIL'S STANDARD SPECIFICATIONS AND TO THE SATISFACTION OF COUNCIL'S ENGINEER.
- EROSION AND SEDIMENTATION CONTROLS SHALL BE CONSTRUCTED AS SHOWN ON SHEET 2 AND 3 OF THIS PLAN AND/OR WHERE DIRECTED BY COUNCIL'S ENGINEER.
- SEDIMENTATION AND EROSION CONTROL DEVICES SHALL BE IMPLEMENTED PRIOR TO OR IN CONJUNCTION WITH THE FIRST PHASE OF EARTHWORKS AND SHALL BE REMOVED ONLY WHEN THE AREAS ABOVE IT HAVE BEEN STABILISED. EACH SEDIMENTATION AND EROSION CONTROL DEVICE SHALL BE INSPECTED AFTER EACH STORM FOR STRUCTURAL DAMAGE OR CLOGGING BY SILT AND OTHER DEBRIS AND PROMPTLY DESILTED, REPAIRED OR REPLACED IF REQUIRED.
- TOPSOIL STOCKPILES SHALL BE LOCATED OUTSIDE HAZARD AREAS SUCH AS DRAINAGE DEPRESSIONS.
- ALL AREAS NOT SUBJECT TO CONSTRUCTION WORKS SHALL BE RETAINED FREE FROM DISTURBANCE OR DAMAGE FOR THE DURATION OF THE WORKS.
- TREES TO BE RETAINED SHALL BE PROTECTED DURING SITE WORKS AND CONSTRUCTION BY THE ERECTION OF SOLID BARRICADES AT THE DRIP LINE OR AS SPECIFIED BY COUNCIL'S ENGINEER.
- THE DEVELOPER OR CONTRACTOR WILL TAKE ALL MEASURES TO PREVENT DAMAGE TO TREES AND ROOT SYSTEMS DURING SITE WORKS AND CONSTRUCTION ACTIVITIES INCLUDING THE PROVISION OF WATER, SEWERAGE AND STORMWATER DRAINAGE SERVICES. IN PARTICULAR, WORKS, ERECTION OF STRUCTURES, EXCAVATION OR CHANGES TO SOIL LEVELS WITHIN 4 METRES OF THE TRUNKS OF TREES TO BE RETAINED ARE NOT PERMITTED UNLESS PART OF THE DEVELOPMENT AS APPROVED, AND THE STORAGE OF SPOIL, BUILDING MATERIALS, SOILS OR THE DRIVING OR PARKING OF ANY VEHICLE OR MACHINERY WITHIN 4 METRES OF THE TRUNK OF A TREE TO BE RETAINED, IS NOT PERMITTED.
- WETTING OF THE SITE SHOULD BE CARRIED OUT AS OFTEN AS NECESSARY AS A FORM OF DUST CONTROL.
- SILT FENCES TO BE CONSTRUCTED WHERE EVER NATURAL SURFACE SLOPES AWAY FROM DISTURBED AREAS OR WHERE DIRECTED BY THE ENGINEER.



Con Katsoulas
BE (Civil), MIEAust, CPEng No. 449924

SURVEYOR	0	DA ISSUE	30/03/24			C.K. ENGINEERING SERVICES	CLIENT:	DRAWING TITLE:	DRAWN: S.C.	SIGNED:	DATE: MARCH 2024
ARCHITECT						ABN 67 115 216 496	PARAMOUNT PLANNING AND CONSTRUCTION	EROSION AND SEDIMENT CONTROL PLAN	DESIGNED: C.K.		SCALE: AS SHOWN
PARAMOUNT PLANNING AND CONSTRUCTION						49 FLORA ST	PROJECT:		CHECKED: C.K.		DATUM: AHD
CONSULTANT	No.	AMMENDMENT	DATE	No.	AMMENDMENT	DATE	6 COWLAND AVENUE EAST HILLS		JOB & DRAWING No:	242421	No. IN SET: 5 OF 5
					DO NOT SCALE						ISSUE: 0